



**24/7 Customer Support**



support@techmatte.com

[www.techmatte.com](http://www.techmatte.com)

STAY CONNECTED



@TechMatte



@TechMatte



/TechMatte



@tech.matte

amFilm®

OneTouch

Installation Guide

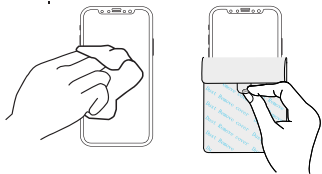
Scan Me



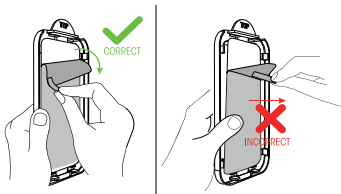
or visit

[www.TechMatte.com/install/OT](http://www.TechMatte.com/install/OT)

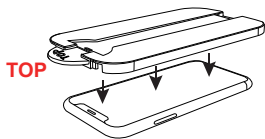
- 1** Begin by cleaning the screen with the Wet Wipes and the Microfiber Cleaning Cloth. Remove any dust with the dust removal cover.



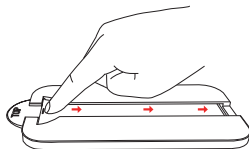
- 2** Pull the tab downwards to remove the mask film. **\*Note: Pull DOWN! Pulling OUTWARDS may dislodge the screen protector from the tray!**



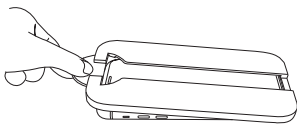
- 3** Place the application tray over your phone screen. the **top** of the tray aligns with the **top** of the phone.



- 4** Press the screen protector on the top and slide over the open cut **SLOWLY**. The screen protector will attach and adhesive will spread automatically.



- 5** Remove the application tray from the phone by lifting it off of the phone. The blue film will come off with the tray.



- 6** If needed, press along the edges of the screen protector to reinforce the adhesive to the phone's surface.

